

Bulletin Technical

NEW SPECIAL COAGULATION TESTS

VON WILLEBRAND PANEL and LUPUS ANTICOAGULANT PANEL

Effective February 2, 2010, Methodist Pathology will offer von Willebrand Factor Activity (Ristocetin Co Factor) in-house. With the addition of this test, we will be able to offer a complete von Willebrand Panel, which includes Factor VIII, von Willebrand Factor Antigen, and the von Willebrand Factor Activity (Ristocetin Co Factor). The von Willebrand Factor Activity and Ristocetin Co Factor are cross referenced as orderables in Cerner.

Effective February 9, 2010, Methodist Pathology will offer the Lupus Anticoagulant Panel. All patients being tested for Lupus Anticoagulant will have a Protime, PTT, Fibrinogen and Thrombin Time performed. If these tests are within normal reference range, no further testing will be required and the patient will be reported as lupus anticoagulant not present. See attached flowchart for reflex and confirmatory tests when abnormal results are found.

Both tests have been updated in our Test Directory at www.thepathologycenter.org. The update includes instructions on obtaining platelet poor plasma and applicable CPT codes. Please call Client Services at 402-354-4541 or 888-432-8980 with any questions.

von Willebrand Panel:

The panel is performed Monday, Wednesday and Friday.

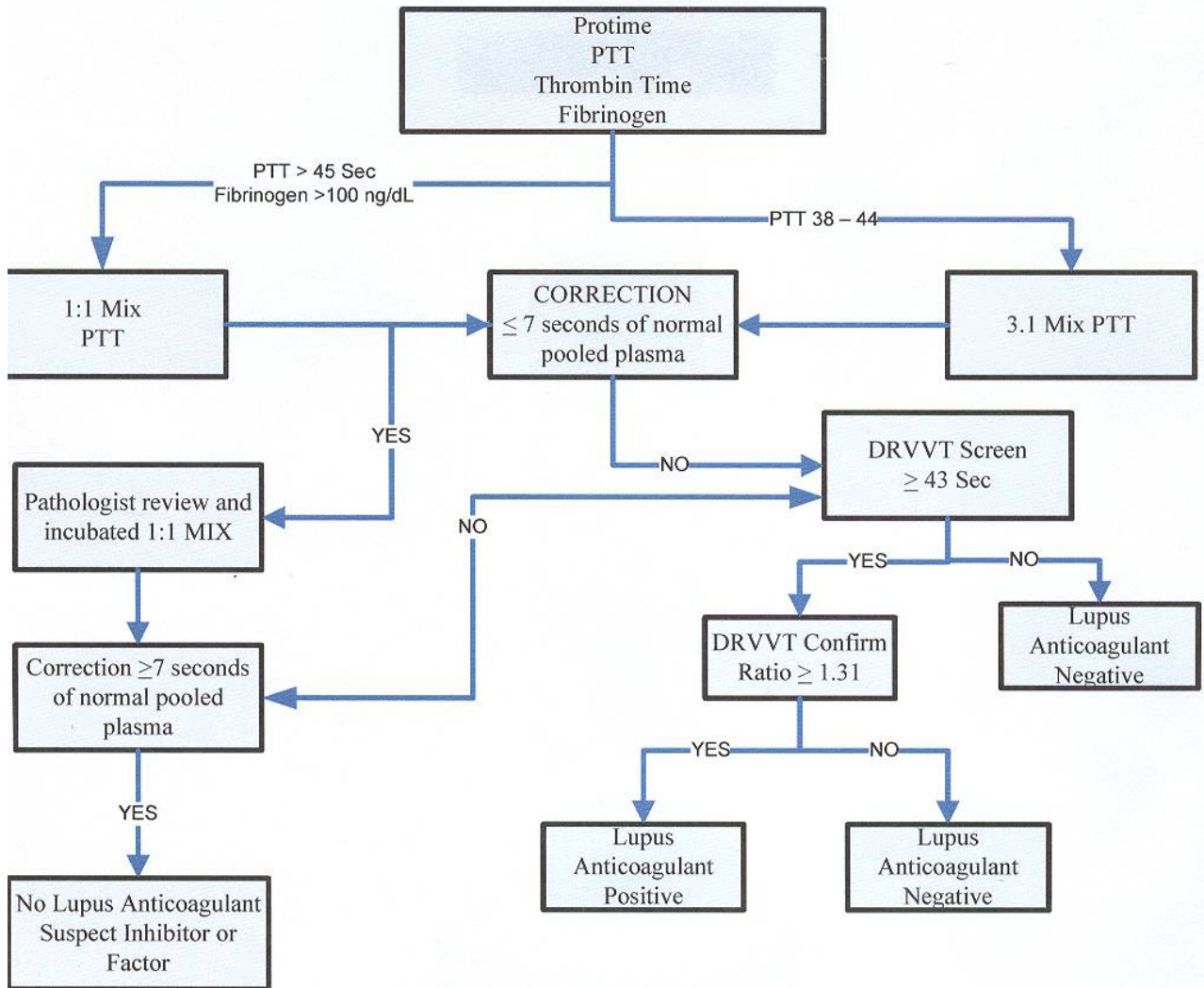
Specimen requirements: Draw two 3 mL blue top tubes. Samples must be spun to obtain platelet poor plasma. Freeze plasma from each blue top tube separately. If ordering other tests that require frozen plasma, please aliquot each into separate tubes.

Lupus Anticoagulant Panel:

The panel is performed Monday, Wednesday and Friday.

Specimen requirements: Draw two 3 mL blue top tubes. Samples must be spun to obtain platelet poor plasma. Freeze plasma from each blue top tube separately. If ordering other tests that require frozen plasma, please aliquot each into separate tubes.

LUPUS ANTICOAGULATION FLOWCHART



All Patients being tested for Lupus anticoagulant will have Protine, PTT, Fibrinogen and Thrombin Times performed. The DRVVT screen and DRVVT confirm tests will be performed as per flowchart.